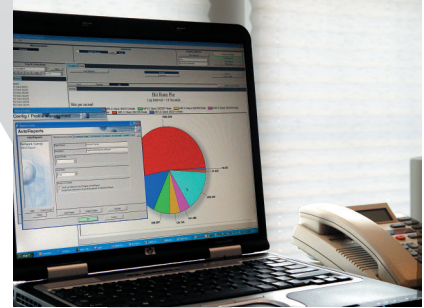


J6848A Report Center

Advanced network analysis and reporting for the Network Analyzer Wireline protocol test product



Comprehensive Data Visualization and Documentation

Report Center, when combined with the Network Analyzer solution, provides network troubleshooting and analysis professionals with a complete software toolkit to help visualize and document high resolution network performance data. Built from the ground up exclusively for network analysis, it has an interactive workspace that is as intuitive as it is powerful. Proprietary visualization rules ensure accurate analysis, while automation tools provide quick and repeatable reporting. All of this in a highly portable, lightweight application.

AutoReporting reduces complex analysis to just a few clicks

AutoReporting functionality makes it easy to create standard network analysis reports with minimal effort. Built-in AutoReports provide insightful views of network data. User-defined AutoReports allow for complete control over the contents and formatting of all report elements. Whether the need is for out-of-the-box reporting, easily repeatable analysis, or centralized report standardization, Report Center with AutoReporting makes the job much easier.

Key Features

- Visually compelling bar and pie charts accurately concatenate large volumes of data into single data points
- Interactive and intuitive workspace
- Proprietary visualization rules ensure accurate analysis
- Visually correlates user-identified problem with their underlying causes

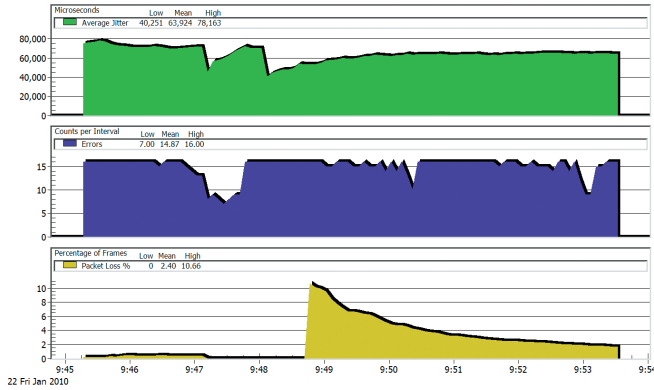
Applications

- Out of the box reporting
- Easily repeatable analysis
- Centralized report standardization

Solve problems directly in the field

Report Center can be used with virtually any PC and does not rely or require a central data management console or remote agents being connected to an operational network to operate. Report Center runs as a standalone application on most any Windows-based OS. It does not rely on a central console and remote agents being connected to a fully-operational network. As a result, Report Center can be used anytime, anywhere in just a few minutes.

RTCP monitor at 5 second intervals
203.208.158.188::16760 <> 203.208.157.7::18628



Analyze and document VoIP calls out in the field directly on your notebook computer

Visualize

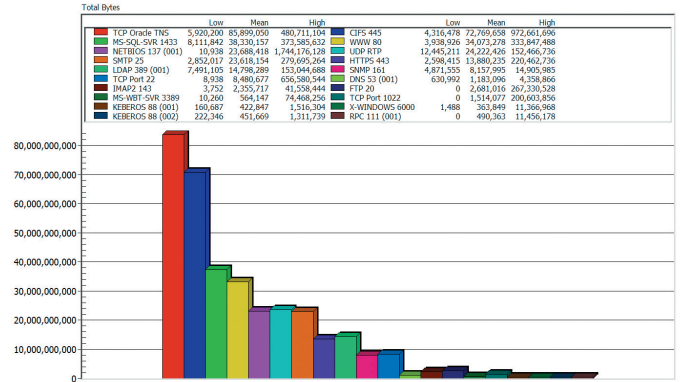
Visually correlate user-identified problems with their underlying causes

Trouble reports typically include only basic information about a problem, such as slow performance, no access, or error messages. Report Center enables visual scanning of pertinent data over time, and then lets you zoom in on suspect areas and look at other statistics captured around the same timeframe.

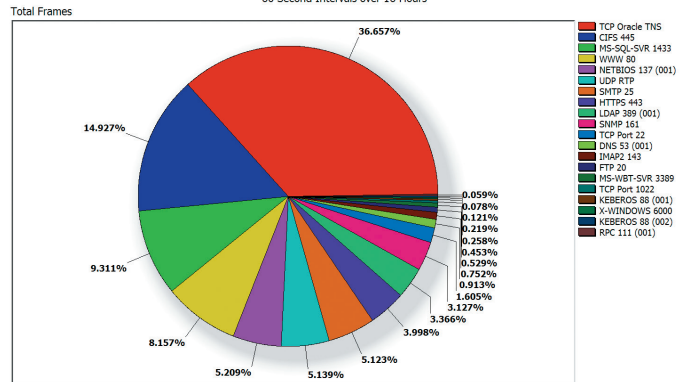
Summary views give the big picture

When looking for overall conditions, summary views either average or total all values for a particular statistic, depending on which is most appropriate. Visually compelling bar and pie charts accurately concatenate large volumes of data into single data points.

10GigE Protocol Summary
60 Second Intervals over 16 Hours



10GigE Protocol Distribution
60 Second Intervals over 16 Hours

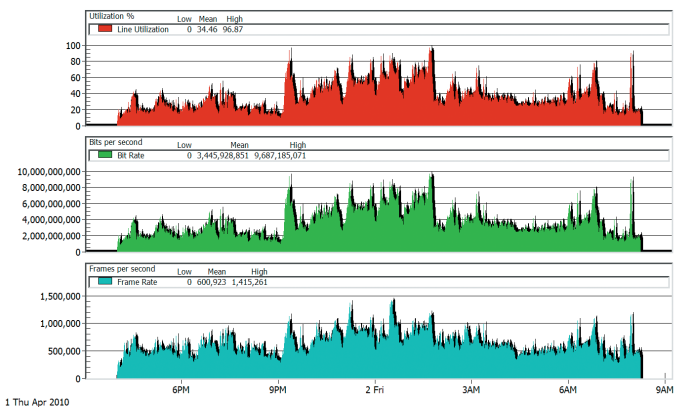


Summary views of the top 20 protocols observed on a 10 Gigabit network

Trend views show hi-resolution detail over time

Identifying changes over time is very easy to do with the trend views. Similar statistics can be grouped together or plotted on their own. Embedded data tables provide a quick summary of low, mean and maximum values over time. Intelligent plotting ensures that data is never misrepresented, as can occur when manually creating charts with generic tools.

10GigE - Port 4 (Hub)
Log Interval = 60 Seconds



16-hour trend view on a 10 Gigabit network

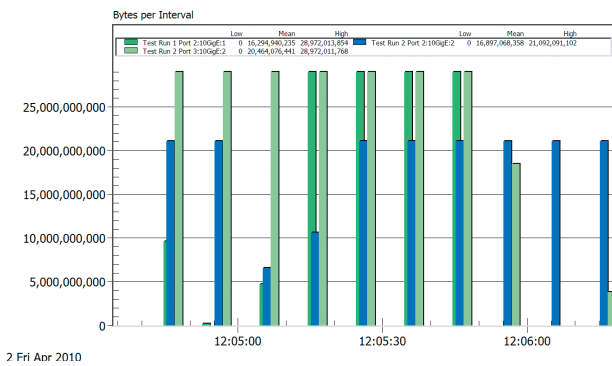
Overlay different time periods to look for trends and anomalies

Unique to Report Center is the ability to overlay data captured at different times to assist in trend analysis. By comparing a known good state with a current trouble state in a single view, the underlying causes of problems can more easily be identified. Comparing historical data with current data also helps with capacity planning, showing long-term changes in network usage by weeks, months, or even years.

Follow traffic across the network

Report Center is an aggregating tool in that it combines data from many different sources into a common database. By monitoring different points on the network, individual conversations can be tracked as they traverse the network, regardless of the technology and physical interfaces they are observed on.

Multiple Test Overlay
View zoomed to 100 second period

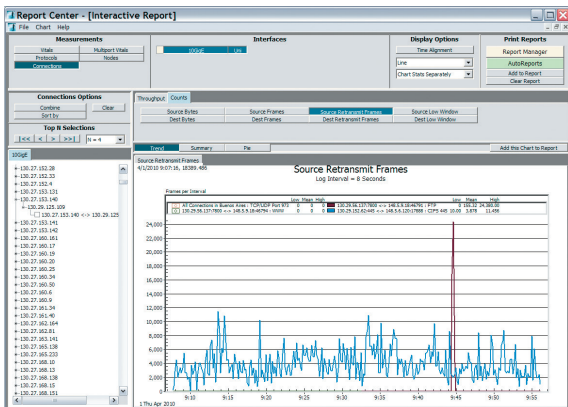


Time shifting, data zooming, and multi-instrument overlays all make for quick analysis

Document

Interactive Reports: Highly customized output

You choose what is to appear in the report based on your needs and observations. While navigating the Interactive Report you can easily add items of interest. Reports can be customized using layout profiles, which can include such items as corporate logos and personal page headers to properly brand reports in your company's image.



Interactive Report workspace allows for detailed analysis of network data

AutoReports: Fast and repeatable output

AutoReporting functionality transforms Report Center's power and flexibility into an easy-to-use point-and-click report generator.

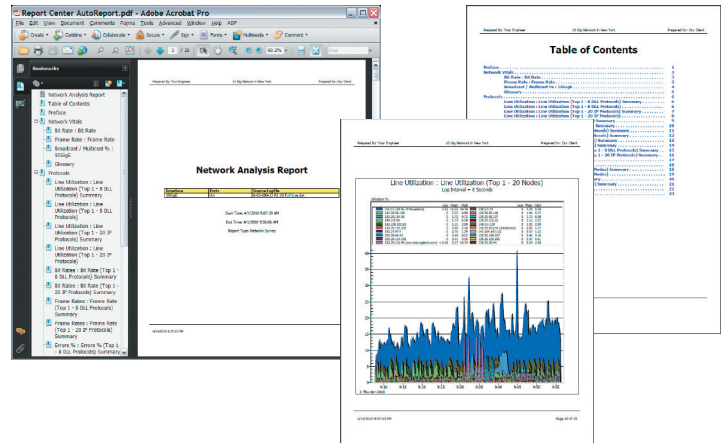
- **Built-in:**
Report Center ships with predefined AutoReports which produce professional results with minimal effort. These built-in AutoReports can be used as is or as templates for more personalized reports.
- **User-defined:**
Report Center allows users to build AutoReports which facilitate the development and distribution of individual corporate standard reports. A comprehensive import/export feature allows AutoReports and many other user-defined parameters and profiles to be stored and distributed across multiple users.

Network installation baseline reference reports

Create records of network deployments and modifications that can be used later to assist in capacity planning and troubleshooting.

Printed and PDF reports are easy to follow

Reports can be sent directly to a printer or output to a PDF file. A table of contents page and PDF bookmarks ease navigation of large reports. Built-in glossary definitions for every network statistic appearing in the report can be included to reinforce comprehension.



Pre-formatted PDF reports are simple to create and visually impactful

Specifications

Measurements	
Vitals	Detailed physical and logical interface, general traffic and key protocol messaging statistics
Channels	General traffic and technology specific statistics presented by Frame Relay DLCI, ATM VPI/VCI, MPLS Stack, and VLAN ID. Observed channel rates can be over-ridden to accurately represent bandwidth utilization on apportioned networks
Connections	IP conversation statistics down to individual protocol and port level connections
Nodes	IP and MAC address statistics
Protocols	Statistics summarized by DLL type (IP, IPX, OSI...) or by higher layer protocol (TCP/UDP, HTTP, VoIP, FTP, user ports ...)
Voice	RTP and RTCP statistics from Network Analyzer combined with statistics from the Viavi VQT. Provides tracking of VoIP calls through the network, characterizing such key parameters as clarity, delay, echo, jitter and packet loss
LMI	Frame Relay Local Management Interface (LMI) statistics per DLCI
CIR	Frame Relay CIR and EIR statistics per DLCI
Policing	Works with Network Analyzer by applying the same Usage Parameter Controls (UPC) to a cell stream that network devices would apply before allowing traffic onto the network. It shows such statistics as conforming and non-conforming cells and those tagged as low priority
Cell Loss/Delay	Quality of Service (QoS) analysis of O.191 test cell stream that measures cell loss, cell transfer delay, cell delay variation, misinsertion rate, and a number of other parameters related to QoS

Licensing
Report Center can be licensed to process Wireline Data or Telephony measurements from Network Analyzer, Viavi Advisor and Viavi VQT instrument families supporting an extensive library of interfaces. Key measurements and interfaces supported include:
Wireline Data License (J6848A#001)
Protocol Stats
Protocol Vitals
Connection Stats (IP)
IP Stats
VLAN Stats
MPLS Stats
MAC Node Stats
Policing
DLCI Stats
VPI/VCI Stats
Telephony License (J6848A#002)
RTCP Monitor
RTP Stats
VQT Stats
Interfaces
10/100/1000 Mbps Ethernet
10-Gigabit Ethernet
HSSI
STM-1/OC-3
STM-4/OC-12
T1/E1
T3(DS3)/E3
V-Series



Contact Us **+1 844 GO VIAVI**
(+1 844 468 4284)

To reach the Viavi office nearest you,
visit viavisolutions.com/contacts.

© 2015 Viavi Solutions Inc.
Product specifications and descriptions in this document are subject to change without notice.
reportcenter-ds-nsd-tm-ae
30168090 900 0610